

# SMART STRATEGIES FOR THE TRANSITION IN COAL INTENSIVE REGIONS (TRACER)

## GOOD PRACTICES

Angel Nikolaev  
Black Sea Energy Research Centre

[tracer-h2020.eu](http://tracer-h2020.eu)



This project has received funding from the European Union's Horizon 2020 research and innovation programme under grant agreement No. 836819 .



Navigation bar with flags and search/social media icons.

**TRACER**  
TRANSITION IN COAL-INTENSIVE REGIONS

ABOUT TRACER | PROJECT PARTNERS | **BEST PRACTICE PLATFORM** | PUBLICATIONS | LINKS | NEWS | CONTACT

Home / Best Practice Platform

## Best Practice Examples Platform for the Transition in Coal-Intensive Regions

On this platform the elaborated best practice examples are presented to summarise the most important information, ideas and achievements for the transition in coal-intensive regions. The map includes the TRACER target regions, as well as countries with best practice examples. At the bottom of the page there are best practice examples ordered by topics.

Map | Satellite

Map data ©2021 Google, INEGI | Terms of Use

# INFORMATION PLATFORM

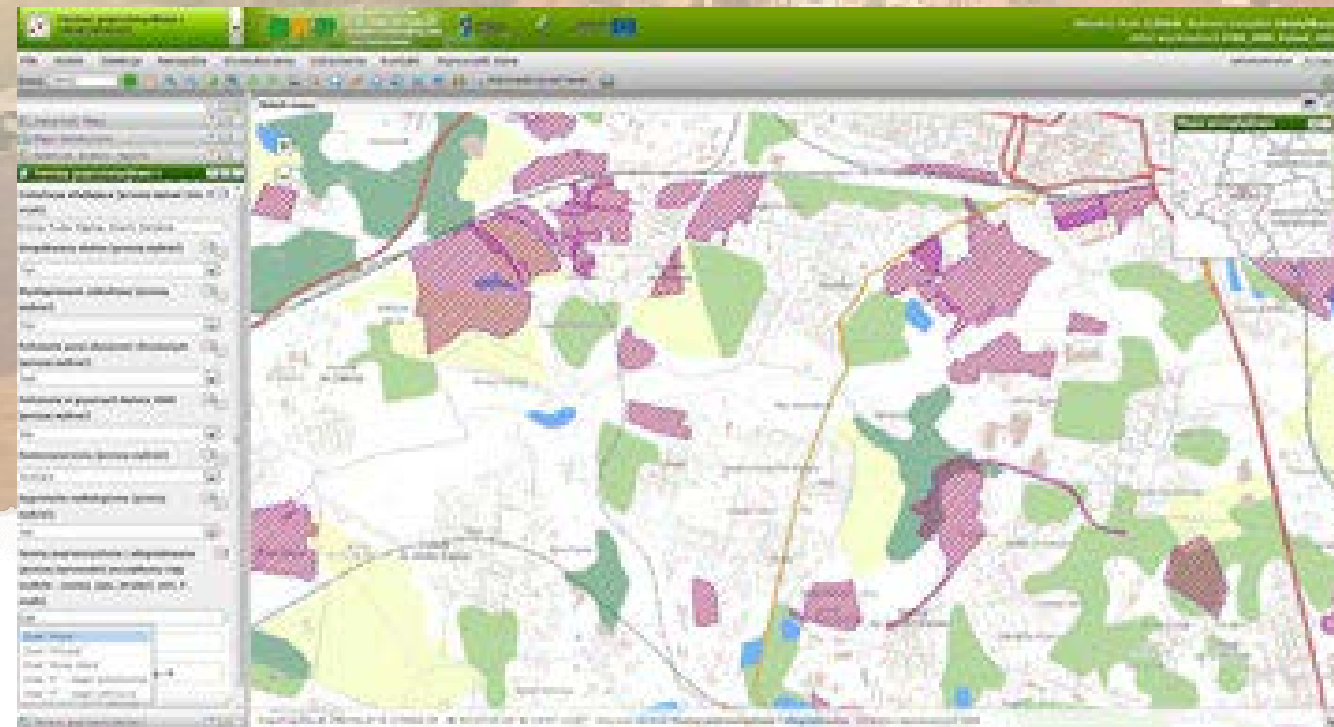
Mapping of degraded post-industrial areas, in Silesia, Poland

Data of 1,000 sites – intended for investors and territory planners



**Funding: € 1.4 mil.**

- 85% ERDF
- 15% national co-financing





# COMPLEX ON THE SITE OF THE FORMER “CONCORDIA” MINE

- Two-storey restaurant in the main building of the former mine
- Preserved buildings and furniture from the beginning of the 20<sup>th</sup> century
- Platform with a view to Zabrze city and the Silesia Region
- Exposition of devices and equipment of the former mine





# SOLAR PARK “SENFTEMBERG”

- Commissioned in 2011
- On the site of the former opencast mine Meuro (1958-1999)
- Area: 500 ha
- 246 MW<sub>p</sub>  
(50,000 households)



# TRANSITION IN THE RUHR REGION, GERMANY (1)

## Background:

- 600,000 employed in coal mining sector in 1957
- The sector had been uncompetitive and its delayed closure costed € 300 bil. in subsidies
- The “top-down” policies until the 1980-ies failed (high unemployment rate)
- In the 1990-ies a successful “bottom-up” approach was initiated through “coal roundtables”



Ruhr museum of coal mining in Essen

# TRANSITION IN THE RUHR REGION, GERMANY (2)

What has been done:

- Encouraging the creation of business clusters
- Support from ERDF for diversification and competitiveness of economy
- Establishing of universities: from 0 in 1965 to 22 in 2014
- Services sector becomes the major economic sector
- Infrastructure: enhanced labour mobility
- Quality of life: cultural and entertainment centers, cleaner air, land and waters





# THANK YOU!

Angel Nikolaev

[angel@bserc.eu](mailto:angel@bserc.eu)

Tel. +359 887431036



[tracer-h2020.eu](http://tracer-h2020.eu)

